

ARTEMIS AIS Class B

Product Type: 5W OEM White Label

Artemis is the world's most sophisticated and robust fully integrated 5W SOTDMA Class B. This product is a fully customisable and flexible white label OEM solution.

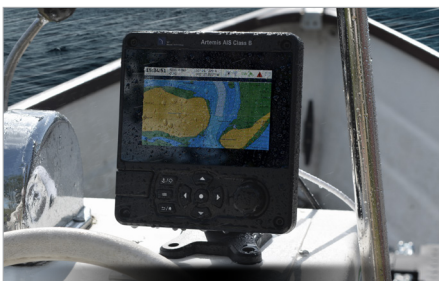
Quality engineered and manufactured without compromise, Artemis is a robust IPx6 and IPx7 weatherproof, fully integrated unit incorporating a high resolution full colour display, CMAP charting and a broad range of functionality. Combined with enhanced operational performance of an SOTDMA type Class B with transmit power of 5W as well as transmit priority in busy areas.

A large integrated high definition colour screen maximises the benefit of Artemis's powerful electronic chart display engine with full detailed chart AIS overlay, and multiple target management functionality, including innovative MOB tracking, AIS AtoN sensor information display, filters, alerts and much more.

- International certified AIS Class B (5W-SOTDMA)
- Fully integrated transceiver
- Water and weather proof - IPx6 & IPx7 certified
- Integrated HD colour display
- Full electronic navigation chart operation (CMAP)
- Multi-lingual menu options
- Day and night display modes
- Integrated long range WiFi
- Dual NMEA0183 and NMEA2000
- Ruggedized - protection from shock and vibration
- MOB & SART alert system and tracking system
- Continuous internal fault check and diagnosis system



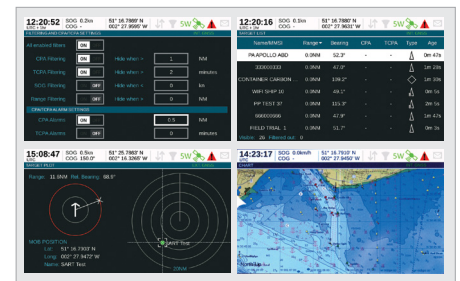
- Receives and decodes all AIS message types
- Ultra power efficient
- Temperature and thermo shock protection system
- Intelligent connectivity for all bridge systems: Gyrocompass, ECDIS, VHF DSC etc
- Optional 'Black Force' encryption for Navy/Coast Guard use



Certified IPx6 & IPx7 weatherproof. Shock & vibration protection. Suitable for external installations.



Full colour display with day and night modes. Integrated CMAP compliant chart engine.



Intuitive, easy to use multi-lingual menu system with an extensive range of features & functionality.

Branding

Our OEM products are supplied fully branded as per your specific requirements. This includes the product, all manuals and packaging such that upon arrival they are instantly ready for you to ship to your customers.

Customisation

SRT products offer unmatched capability to be customised for specific applications and markets. Additional features and functions can be specified and implemented and range from the simple to complex encryption and messaging features.

Certification

This product is fully tested and certified to the relevant international standards and product specifications. As part of the OEM customisation process into your brand, international certification can be transferred into your brand name within a matter of weeks.

Physical Specification

Dimensions	152mm x 165mm x 79mm
Weight	1.5kg

Electrical Specification

Power supply	12 to 24VDC
Power consumption	<12W

Connectors

VHF antenna connector	SO-239 / UHF
GNSS antenna connector	TNC
Power	Two pin connector (cable provided)
Serial interfaces and alarm relay	18 pin connector (data accessory cable provided)
Serial inputs	14 pin connector (cable provided)
NMEA2000®	NMEA 2000 Micro connector

Data Interfaces

NMEA0183 (IEC61162-2) bi-directional ports	3
NMEA0183 (IEC61162-1) sensor inputs	3
DGPS correction data input (ITU-R M.823-2)	1
Alarm relay output	1
NMEA2000	1
WiFi	802.11 b/g/n

Standards Compliance

AIS standard	IEC62287-2 Ed 1.0 ITU-R M.1371-5
Serial data interfaces standards	IEC 61162-1 Ed 4.0 IEC 61162-2 Ed 1.0 IEC 61162-3 2008 Ed 1.2
Environmental standard	IEC 60945 Ed 4.0
GNSS performance standard	IEC 61108-1 Ed 2.0 IEC 61108-2 Ed 1.0
Product safety	IEC 60945 Ed 4.0

VHF Transceiver

Transmitter	1
Receiver	3
Frequency	156.025MHZ to 162.025MHZ
Output power	5W
Channel bandwidth	25KHz
Channel step	25kHz
Modulation modes	GMSK-TDMA
Bit rate	9600bits/sec
Receiver sensitivity	-107dBm @ 20% PER

GNSS Receiver and Antenna

Channels	72
GNSS systems	GPS, GLONASS
IEC61108-1	Compliant
IEC61108-2	Compliant
GNSS antenna	Supplied

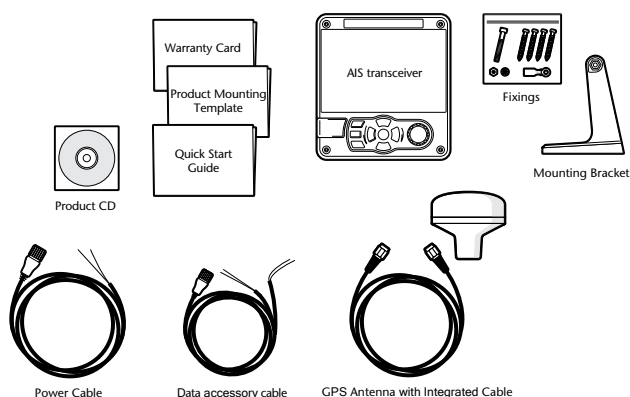
User Interface

5" 800 x 480 full colour LCD display
Rotary encoder for selection and entry
Four menu keys and four direction keys
Micro SD card for software updates and charts

Environmental

Waterproof	IPx6 & IPx7 rated for water ingress
IEC 60945	'Protected' category
Operating temperature	-15°C to +55°C

What's In The Box



201-0790:1